

📍 Kenleaf, Brakpan



**A FRESH** *Start*

Incredible IGrow discounts of up to **R106,073!**





*Perfectly*  
**LOCATED PROPERTY  
INVESTMENT**

---

2 Bed & 3 Bed Apartments  
**FROM R664,000**

 Kenleaf, Brakpan



Ideal affordable investment in Brakpan, with beautifully finished apartments, where style and functionality come standard. Generous outdoor facilities make the estate well-suited to active young professional couples and families with children.

The estate is in an excellent location with high rental demand and offers comprehensive security features for complete peace of mind.



**GREEN  
LEAF**

# Incredible BENEFITS FOR INVESTORS



WITH IGROW DISCOUNTS OF UP TO R106,073! HOW?

- IGrow Bonus (Rental Assist) up to **R20,400\***
- Bond and Transfer fees included (**saving you up to R54,950\***)
- 2-year FREE Rental Management discount valued up to **R30,723\***

## ADDITIONAL BENEFITS

- Rental income up to **R6,800\***
- ROI up to **13.33%\***
- Monthly contribution as low as **R997 / month\***
- **Already tenanted** - earn income on registration
- Up to **100%** bond financing arranged for you
- **Zero deposit** required



# Development

## KEY HIGHLIGHTS

- Solar inverter for reduced load-shedding
- Landscaped green spaces, parks, and outdoor braai areas
- Soccer and cricket pitch for older kids
- Fenced play area for younger children
- Secure perimeter wall and electric fencing
- Biometric access control
- Manned guardhouse and armed patrols
- 1 carport per unit, plus additional parking space available





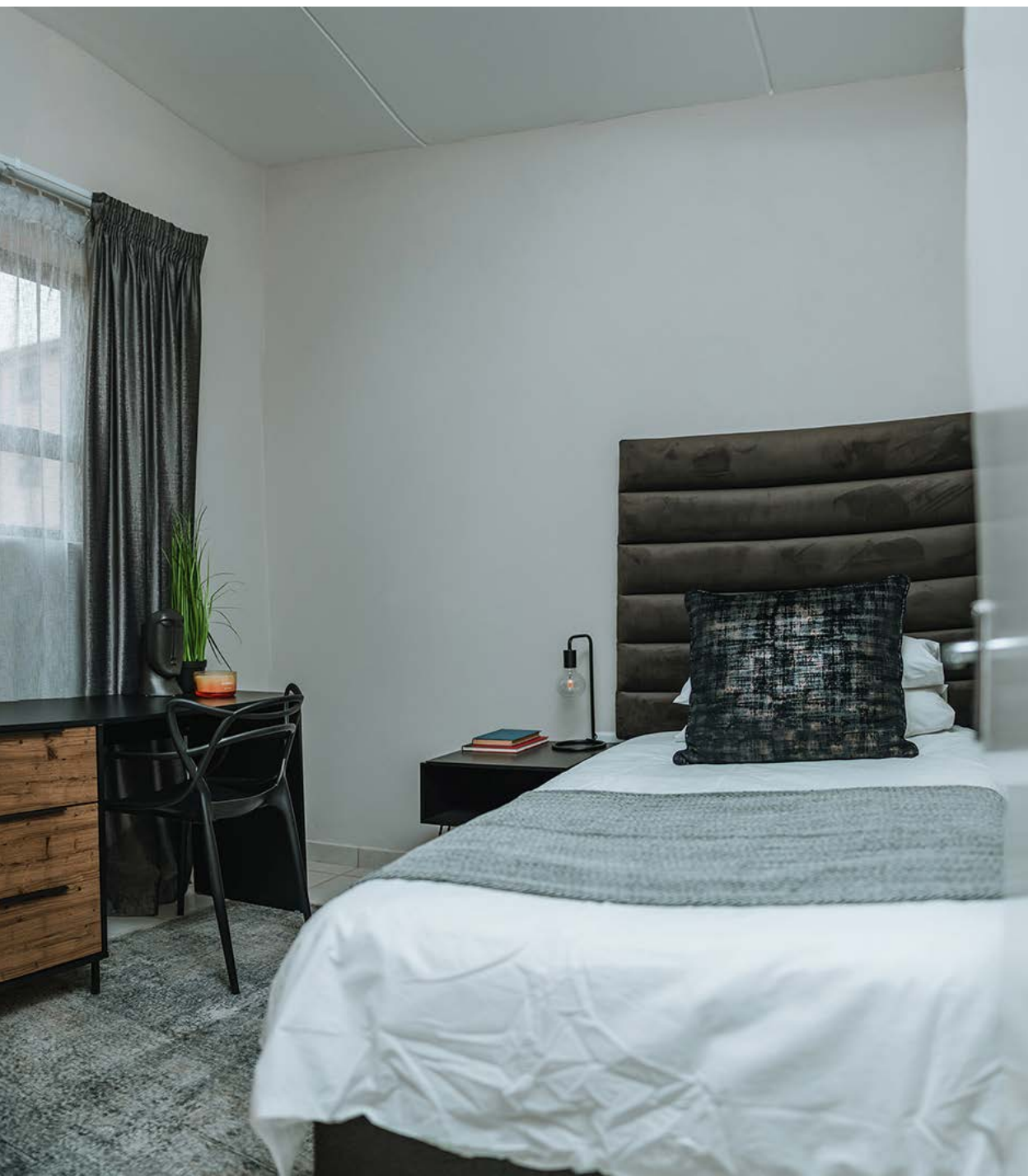
**GREEN  
LEAF**

# *Apartment*

## **FEATURES & PERKS**

- Sleek black granite kitchen countertops
- Gas stoves
- Stylishly tiled throughout
- Built-in cupboards in the kitchen and bedrooms
- Aluminium window frames
- Energy-efficient Induction geysers
- Prepaid electricity meters
- Space for washing machine/ dishwasher







# *Discover* **KENLEAF, BRAKPAN**

Tenants love homes this close to work, major commuter routes, schools, healthcare, and shopping centres. Entertainment for the whole family is just down the road at Carnival City Casino.





### Shopping & Entertainment

- **1.5 km** to Rose Tulee family restaurant with playpark and live music
- **4.2 km** to Carnival City Mall and Entertainment World



### Health & Wellness

- **2.1 km** to Life Dalview Hospital
- **2.1 km** to Life Dalview Clinic
- **4.8 km** to Brakpan Sports Fields and Indoor Sports Centre

### Education

- **2.2 km** to Hoërskool Stoffberg
- **2.5 km** to Dalpark Primary School
- **2.8 km** to Dalpark Secondary School
- **5.2 km** to Curro Helderwyk

# 2 Bed | 1 Bath *Apartments*

Unit size:	<b>42m<sup>2</sup></b>
Projected monthly rental income up to:	<b>R5,700</b>
Projected monthly bond repayment (30yr @ 10.50%):	<b>R6,074</b>
Est. monthly levy (Excl. Effluent charge):	<b>R615</b>
Est. monthly property rates:	<b>R480</b>
Est. monthly contribution from:	<b>R997</b>
Rental Assist up to:	<b>R15,600*</b>

**PRICED FROM R664,000**



# 3 Bed | 2 Bath *Apartments*

Unit size:	42m <sup>2</sup>
Projected monthly rental income up to:	R6,700
Projected monthly bond repayment (30yr @ 10.50%):	R6,970
Est. monthly levy (Excl. Effluent charge):	R736
Est. monthly property rates:	R480
Est. monthly contribution from:	R686
Rental Assist up to:	R20,400*

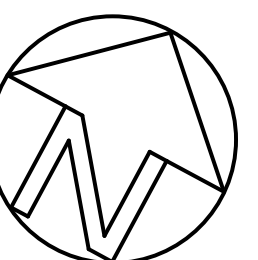
**PRICED FROM R762,000**



# Site DEVELOPMENT PLAN | 133 UNITS



GLOUCESTER ST



# Floor PLAN



GLOUCESTER ST

## APARTMENT TYPES

2 BED APARTMENTS X 114

3 BED APARTMENTS X 19

## PHASES

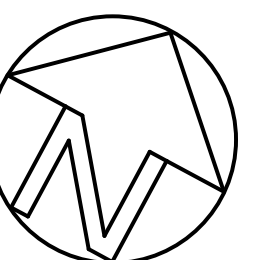
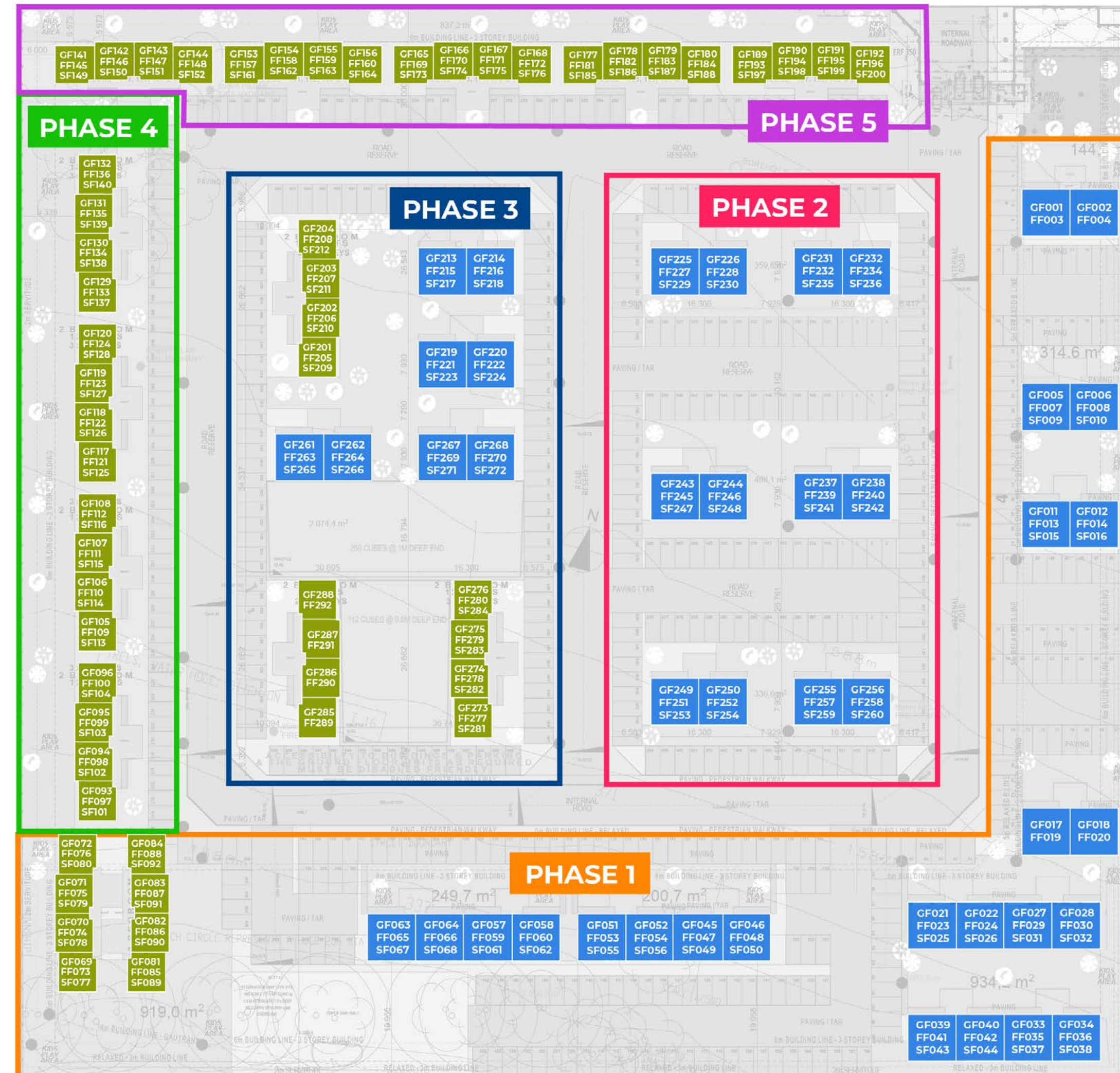
PHASE 1

PHASE 2

PHASE 3

PHASE 4

PHASE 5





# *Get in touch*

## **WITH US TODAY!**

IGrow is your trusted partner in property investment, helping first-time and seasoned investors achieve financial independence through smart, high-performing property investments.

**WE'RE HERE TO GUIDE YOU EVERY  
STEP OF THE WAY.**



+27 (21) 979-2501



info@igrow.co.za



#### **Disclaimer**

IGrow makes no warranties, whether expressed or implied, regarding contents, accuracy, financial projections and/or assumptions, nor availability. The User assumes all responsibility and risk for the use of the information and other material provided. IGrow shall not be liable for any loss, injury, damage, cost, penalty, or claim resulting from the use of the materials or projections/assumptions, whether direct or indirect. The User indemnifies IGrow and holds it harmless against any and all liability, loss, damage, penalty, cost or claim of whatsoever nature suffered by any third party concerning any act or omission by the User in relation to the information and the use thereof by the User. Attorney and bond fees for transfer paid by Seller only where appointed attorney attends transfer. This may exclude buyers using bank facilities. Fees excluding any bank initiation fee, correspondent attorney fees and courier fees if applicable.

#### **Footnotes:**

\*Depending on unit chosen

\*\*Rental assist only applicable where buyer signs a rental mandate with IGrow Rentals for the duration of the rental assist offering.