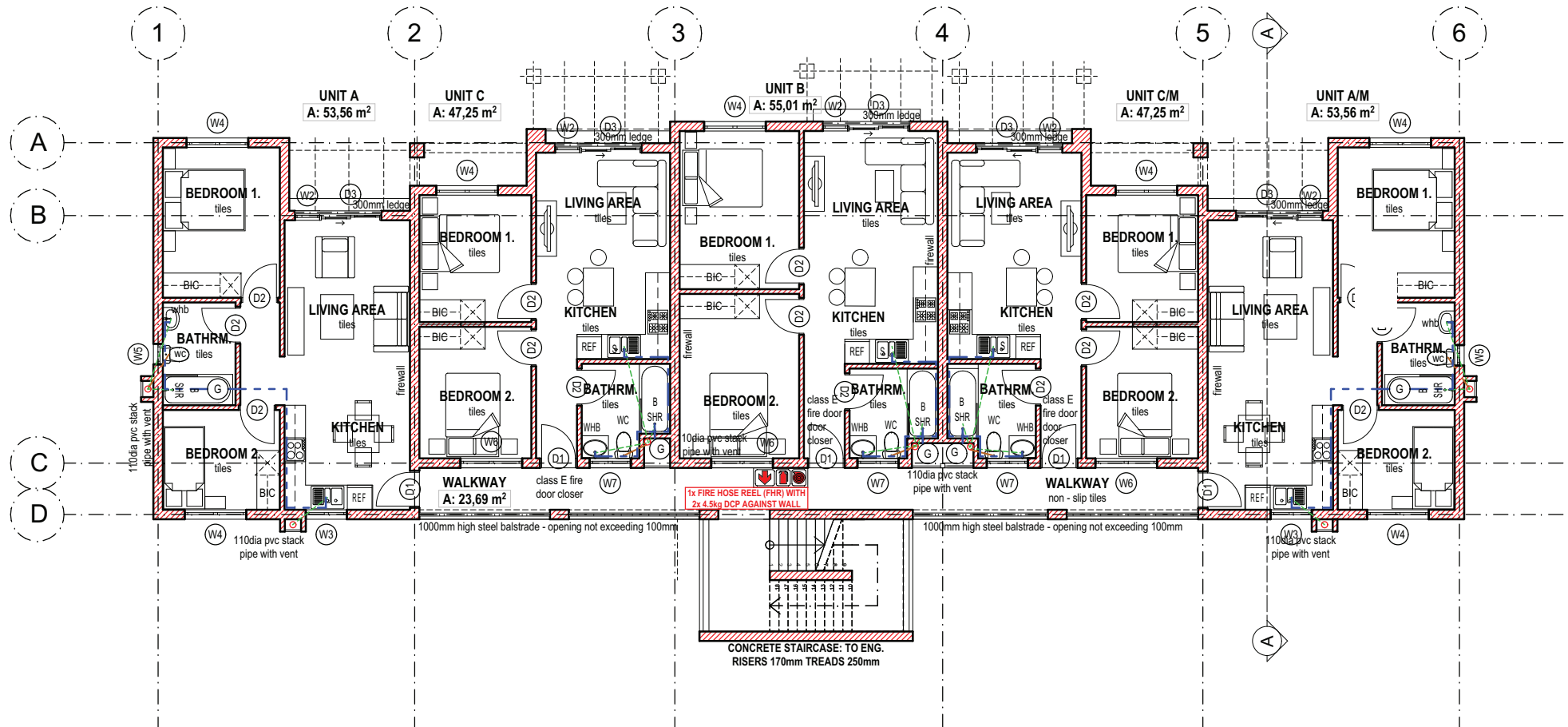


**BLOCK 1 - GROUND FLOOR**

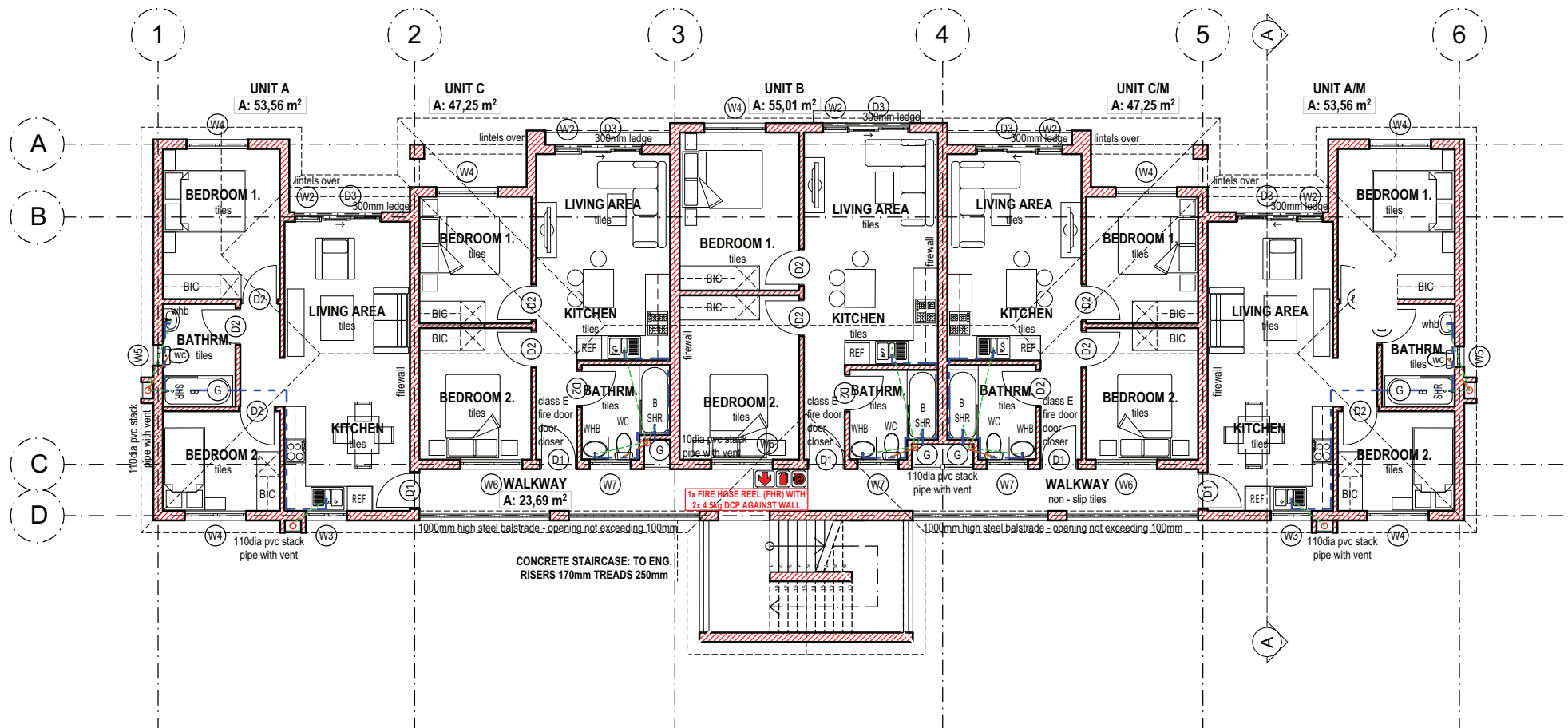


# CLEARWATER

## VILLAGE



**BLOCK 1 - FIRST FLOOR**

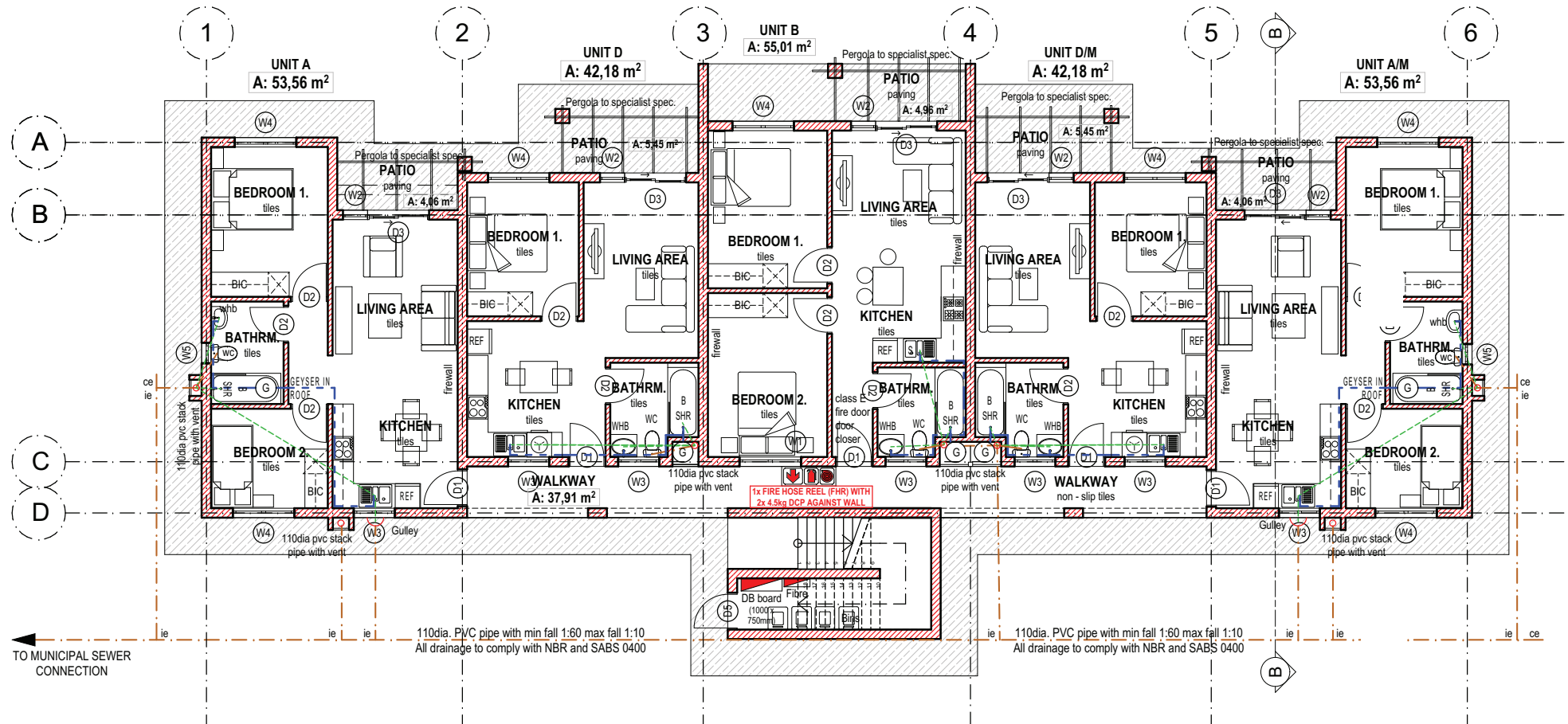


**BLOCK 1 - SECOND FLOOR**

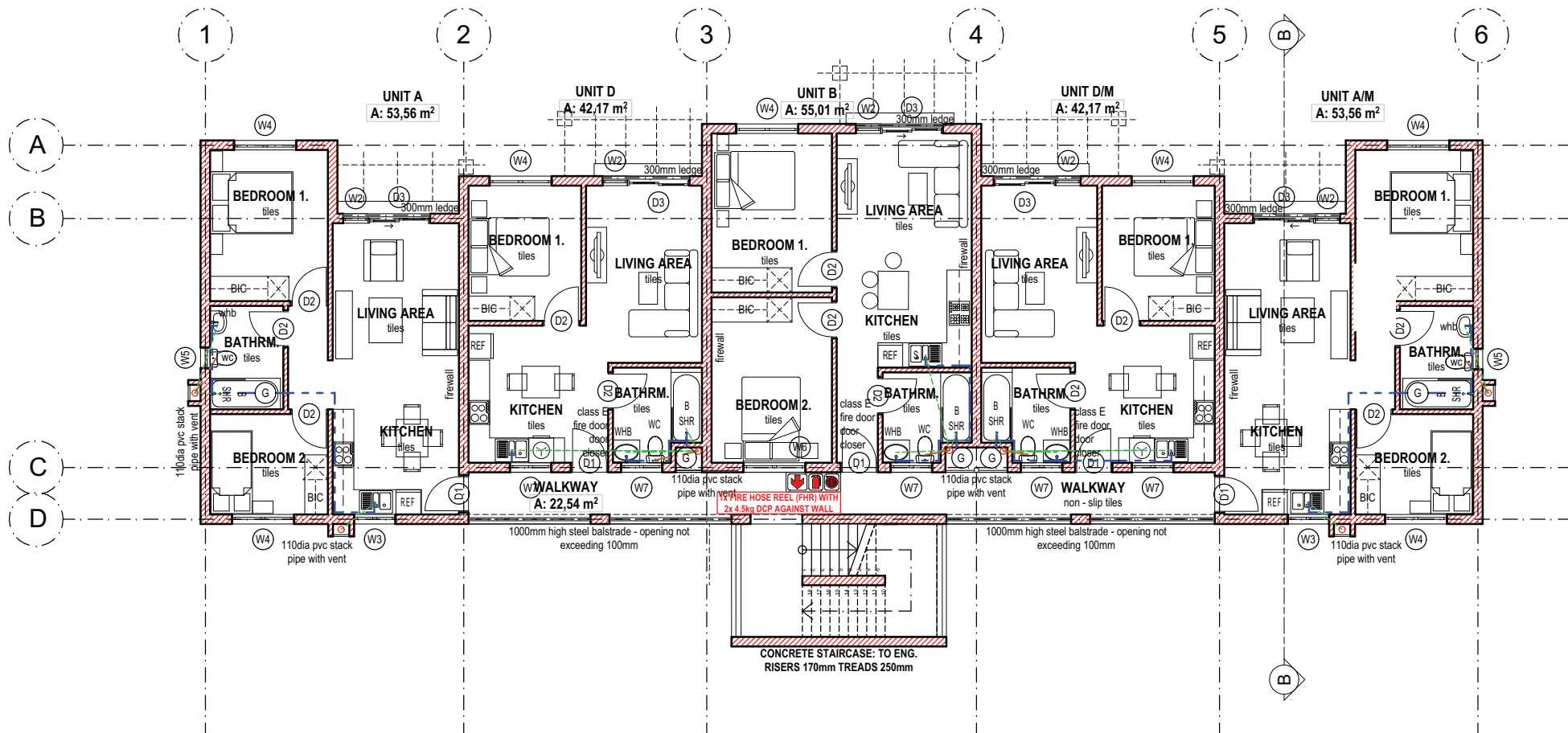


# CLEARWATER

## VILLAGE



**BLOCK 2 - GROUND FLOOR**

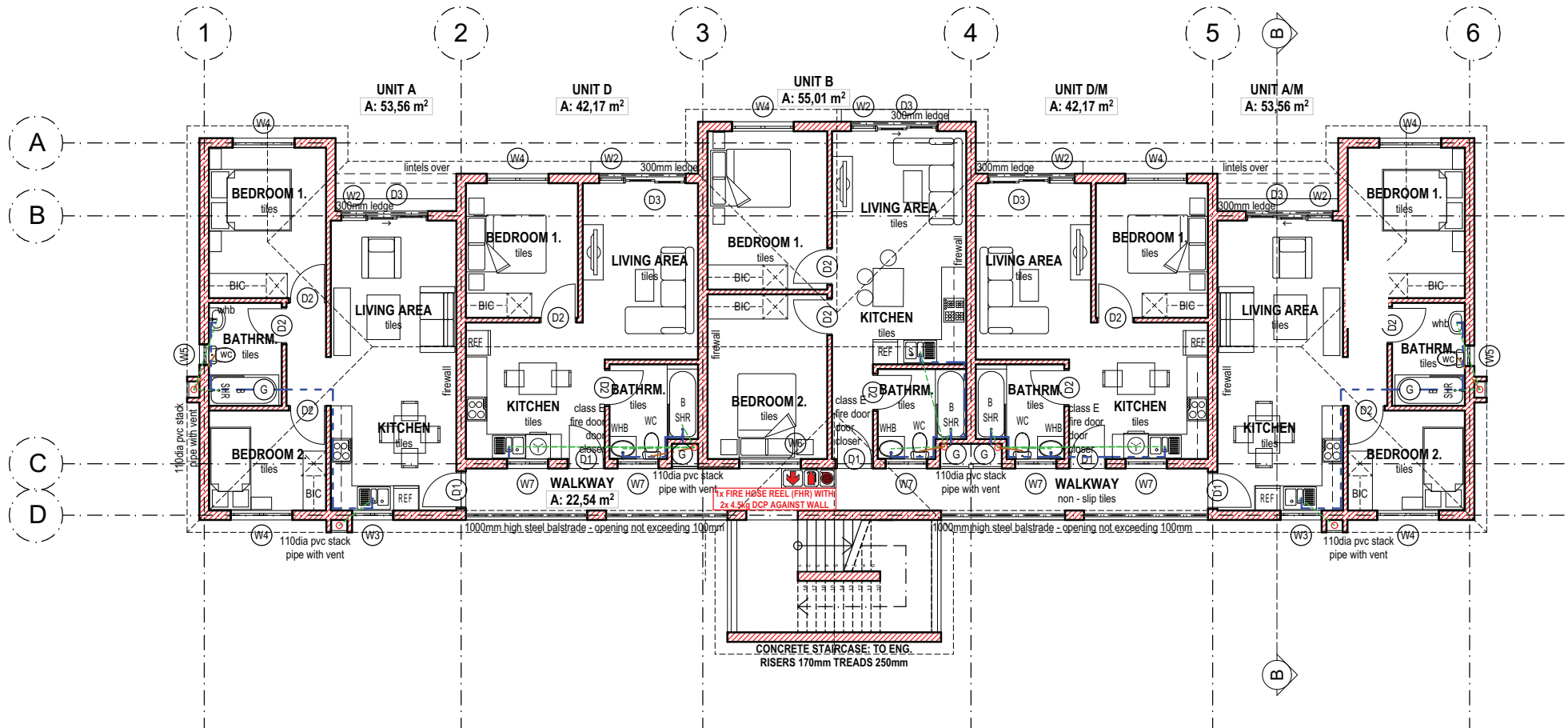


**BLOCK 2 - FIRST FLOOR**

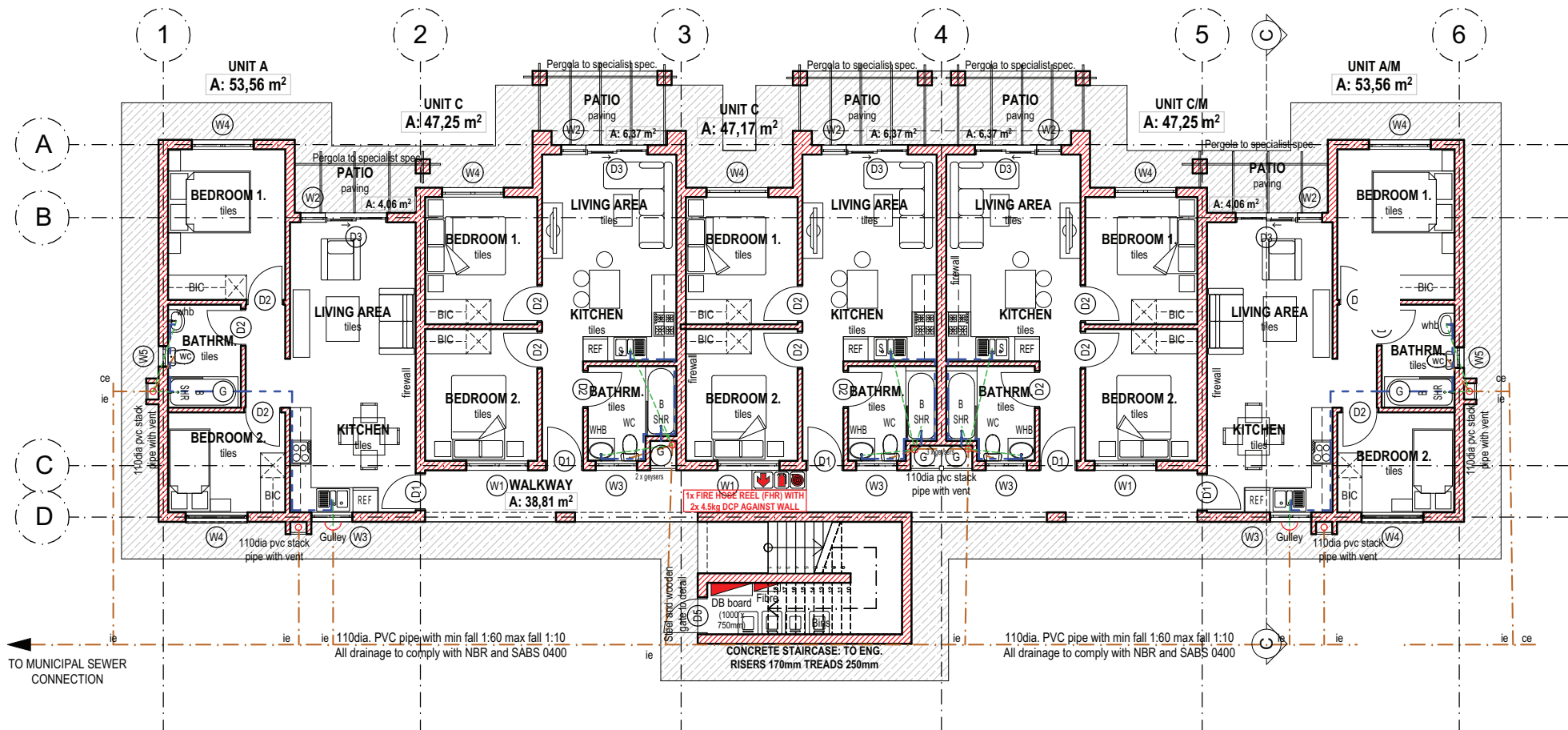


# CLEARWATER

## VILLAGE



**BLOCK 2 - SECOND FLOOR**



TO MUNICIPAL SEWER CONNECTION

110dia. PVC pipe with min fall 1:60 max fall 1:10  
All drainage to comply with NBR and SABS 0400

CONCRETE STAIRCASE: TO ENG.  
RISERS 170mm TREADS 250mm

110dia. PVC pipe with min fall 1:60 max fall 1:10  
All drainage to comply with NBR and SABS 0400

# BLOCK 3 - GROUND FLOOR





